

Meet the leadership team



Alison Turner

NHH Operations Manager

Alison oversees our operations activities, including our Developer Charging Arrangements.

aTurner4@anglianwater.co.uk



Claire Jones

Customer Delivery Manager

Claire manages our scheduling team who plan all our site based operations.

cJones8@anglianwater.co.uk



Don Maher

Head of NHH Market Services

Don is Head of Non-Household Services and oversees all developer, Self Lay Provider, New Appointment Variation and retailer customer experiences.

dMaher@anglianwater.co.uk



Ellie Thomas

Connections Services Manager

Ellie manages our Water Connections and Customer Extra Care teams.

eThomas2@anglianwater.co.uk

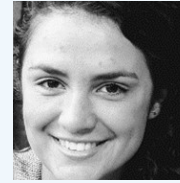


Gary Boddington

Drainage Strategy and Development Manager

Gary manages strategy and processes within our drainage journeys.

gBoddington@anglianwater.co.uk

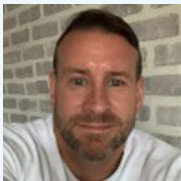


Hannah Calderon

DS Strategy Manager

Hannah manages our Pre-Development team supporting customers at pre-planning stage.

hCalderon@anglianwater.co.uk



Jonathan Walker

DS Portfolio Manager

Jonny looks after our improvement portfolio to enhance customer experiences in water connections.

jWalker2@anglianwater.co.uk

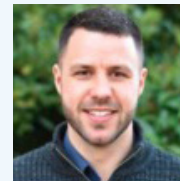


Neil Padwicke

Drainage People and Performance Manager

Neil oversees our teams supporting customers in all drainage activities.

nPadwicke@anglianwater.co.uk



Carl Sturman

DS Senior Operations Manager – East

Carl and his team work closely with our partners in planning and construction of mains engineering and connections services.

cSturman@anglianwater.co.uk



Garry Kerman

Regional Self-Lay Manager

Garry manages our Self-Lay and NAV team.

gKerman@anglianwater.co.uk



Jon Snowball

CDM and Assurance Manager

Jon ensures the work we complete meets the correct requirements, regulations and health and safety protocols.

jSnowball@anglianwater.co.uk



Paul Salmon

DS Mains Engineering Manager

Paul manages our pre-development teams, supporting customers in mains engineering and delivery teams.

pSalmon3@anglianwater.co.uk



Luke Crump

Growth Liaison Manager

Luke is our key account manager for all NAV and Self-Lay provider customers across our region.

LCrump@anglianwater.co.uk



Paul Lancaster

Growth Liaison Manager

Paul is our key account manager for customers in the East of our region (Essex, South Norfolk and Suffolk)

pLancaster@anglianwater.co.uk

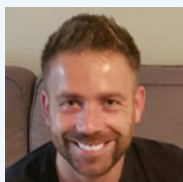


Rob Morris

Growth Liaison Manager

Rob is our key account manager for customers in the central area of our region (Cambridgeshire and North Norfolk).

rMorris2@anglianwater.co.uk



Jonathan Hardy

Growth Liaison Manager

Jonathan is our key account manager for customers in the North of our region (North of Peterborough, Lincoln and Louth).

jHardy3@anglianwater.co.uk



John Young

Growth Liaison Manager

John is our key account manager for customers the West of our region (Northants, Bucks, Beds and Leicester borders).

jYoung5@anglianwater.co.uk



Hannah Wilson

Pre-Development Planning Manager

Hannah works closely with our Local Planning Authorities and Lead Local Flood Authorities across the region.

hWilson6@anglianwater.co.uk



James Ball

Head of Development Services Delivery

James is Head of Development Services Delivery and oversees all operational and enabling activities in design and construction for developer, SLP and NAV customers.

jBall2@anglianwater.co.uk