



love every drop  
anglianwater 

Name

Two horizontal dotted lines for writing a name.

Explore more  
about how we keep  
pipes clear here



**Just bin it  
to keep the pipes clear**

Nappies and wipes block  
pipes. So only flush the 3p's  
- pee, poo & toilet paper

See how you can  
save our environment  
with challenges, games  
and quizzes inside!





# Why keep it clear?

## Did you know?

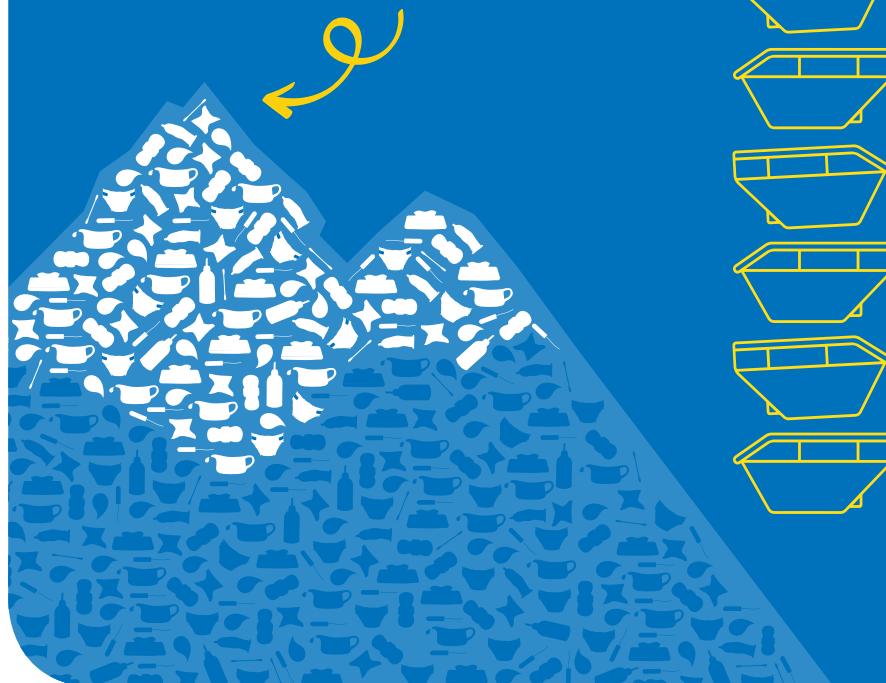
Our teams find **1 blockage every 15 minutes** in the pipes and sewers.

This is because lots of things are put down the sink or toilet that shouldn't be there.



## Fun fact

If you stacked all the skips full of unflushables on top of one another – you could **almost reach the top of Mount Everest!**



Find out more about our interactive education STEM-based lessons for your class:  
[anglianwater.co.uk/your-local-area/education/schools/Online-STEM-lessons/](http://anglianwater.co.uk/your-local-area/education/schools/Online-STEM-lessons/)





Quiz the grown-ups and see how well you all score over the next eight questions. **Circle your answers.**

## The sewer network

1. How many kilometres of sewer pipes does Anglian Water look after?
  - A. 1,363 km – enough to go from one end of the UK to the other
  - B. 40,000 km – enough to go round the world once
  - C. 77,000 km – enough to almost go round the world twice
2. How many blockages a year does Anglian Water clear?
  - A. 30,000
  - B. 20,000
  - C. 10,000

## Wipes

3. How many wipes clog up Anglian Water's sewers?
  - A. 250 tonnes
  - B. 800 tonnes
  - C. 500 tonnes
4. Which can be flushed down the toilet?
  - A. Cleaning and make up wipes
  - B. Moist toilet tissue
  - C. None of these – even if it says flushable on the packet

## Fats, oils, cotton buds and grease

5. How many people, according to a survey, admitted pouring oil down the sink?
  - A. 27%
  - B. 17%
  - C. 7%
6. How many people, according to a survey, realised that pouring oil down their sink was the main cause of a blockage in the pipes?
  - A. 25%
  - B. 35%
  - C. 45%

## Cotton buds

7. How many tonnes of cotton buds are sold in the UK each year?
  - A. 5,000 tonnes
  - B. 11,000 tonnes
  - C. 8,000 tonnes
8. How many adults, according to a survey, admitted flushing cotton buds down the toilet?
  - A. 3 in 10
  - B. 2 in 10
  - C. 1 in 10

Answers on page 8





## Activity



# Bin it, don't flush it

Look at the items below. Draw a line to tell us which you think should be put in the bin or down the toilet. Check your answers at the bottom of the page.

a.



Wipes

b.



Poo

c.



Cotton bud

d.



Wee

e.



Nappy

f.



Toilet paper



Toilet



Bin

Answers – Toilet: b,d,f Bin: a,c,e





# Word search



Look in all directions – words are horizontal, vertical, or diagonal – forwards or backwards.

There are lots of ways to help keep pipes clear.  
Some of them are listed in the word search below.

T	K	S	A	N	N	Y	E	F	W	E	C	O	S	P
Q	E	I	D	T	R	R	N	D	R	E	E	C	E	N
Q	J	L	T	A	E	P	V	P	P	E	O	H	P	O
M	H	D	I	C	E	Q	I	Z	M	O	O	L	I	I
S	E	Z	Y	O	H	B	R	O	K	C	F	W	P	T
H	F	C	D	U	T	E	O	I	N	A	M	R	S	U
T	L	K	M	R	W	R	N	R	T	F	W	M	R	L
E	X	X	N	M	H	G	M	C	C	Y	Y	E	X	L
E	A	V	C	T	O	F	E	B	E	I	W	W	N	O
S	N	H	A	I	C	X	N	I	M	E	M	U	A	P
S	I	B	L	W	K	U	T	N	S	Z	R	G	P	N
B	U	N	I	N	B	L	O	C	K	A	G	E	P	N
D	D	P	K	B	R	P	E	S	A	E	R	G	I	G
D	S	D	U	B	N	O	T	T	O	C	P	O	E	I
W	I	P	E	S	F	I	K	Z	D	K	B	Q	S	L

Bathroom  
Bin  
Blockage  
Cooking Oil

Cotton buds  
Environment  
Fat  
Grease

Kitchen  
Micro beads  
Nappies  
Pipes

Pollution  
Recycle  
Sewer

Sink  
Toilet  
Wipes

Activity





# Did you know?

Remember to only flush the 3 P's. Poo, Pee and toilet Paper.

More than 800 tonnes of wipes and waste clog up our sewers and pumping stations across the Anglian Water region every week. That's the same weight as 4 blue whales.

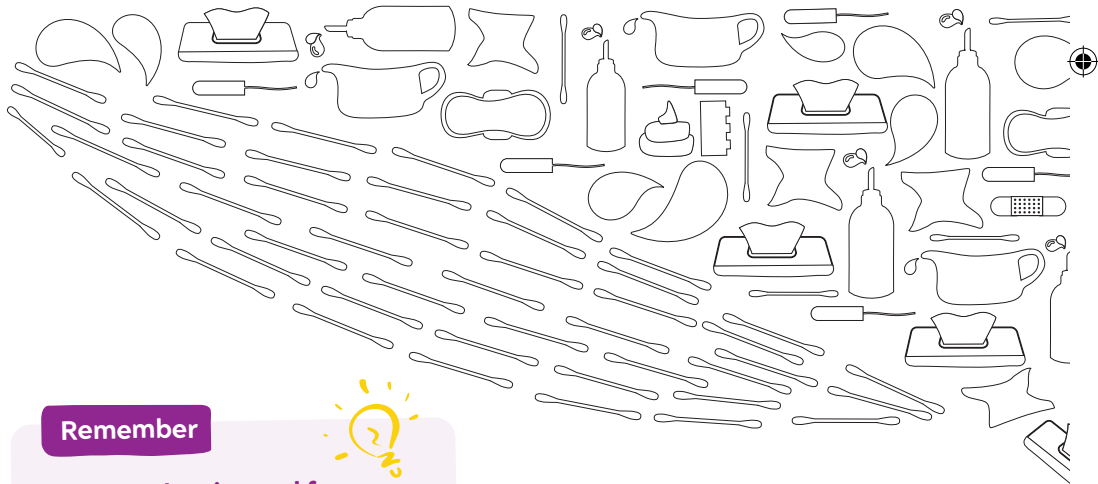
## Activity



Colour in the whale and see how many different colours you can use.

## Did you know?

Cotton buds should always be put in the bin after use.



## Remember



**All baby, cleaning and face wipes should never be flushed down the toilet.**

Even wipes marked flushable do not break down in the pipes and can cause a blockage.

**Don't forget to check out our water recycling site tour video**



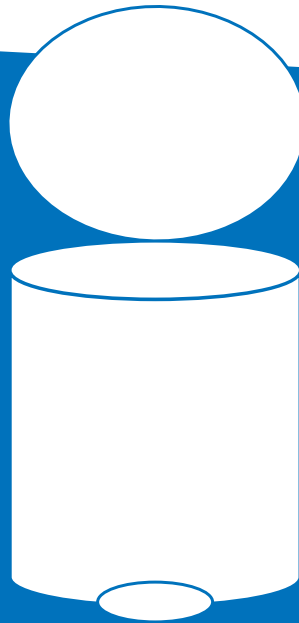
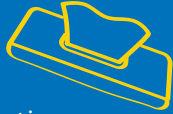


## Activity

# Design a funky bin

## Did you know?

Unflushable items like wipes may contain tiny plastic micro beads, which is a massive threat to marine life.



## Don't forget

**To tell your grown up to recycle their cooking oil.**

Fat, oil or grease from cooking eggs, bacon or sausages, roast dinners, woks and curries should never be poured down the sink. Instead wait until it cools, then bin or recycle.

## Remember

**Before washing pots, pans and plates, scrape food waste into a bin or recycle it.**

Use a sink strainer to stop food scraps going down the plughole.





# Nappies and wipes can block pipes



The size of your wastewater pipe is around 10cm wide, that's the same size as an average persons fist, so sewer pipes can easily block if the wrong items are flushed as these items don't dissolve in water.

10cm



## Fun facts

Wet wipes do not  
breakdown in the  
sewer, even if the  
packet says you can  
flush them down the loo.

Once we are 2 years old, each person has gone through an average of **17,500 baby wipes** and **4,500 nappies** as a baby.

## Answers to quiz – From the quiz on page 3

1. C. 77,000 km      3. B. 800 tonnes      5. A. 27 per cent      7. B. 11,000 tonnes  
2. A. 30,000      4. C. None of these      6. C. 45 per cent      8. A. 3 in 10

Find out more about how you can help keep our pipes clear here

